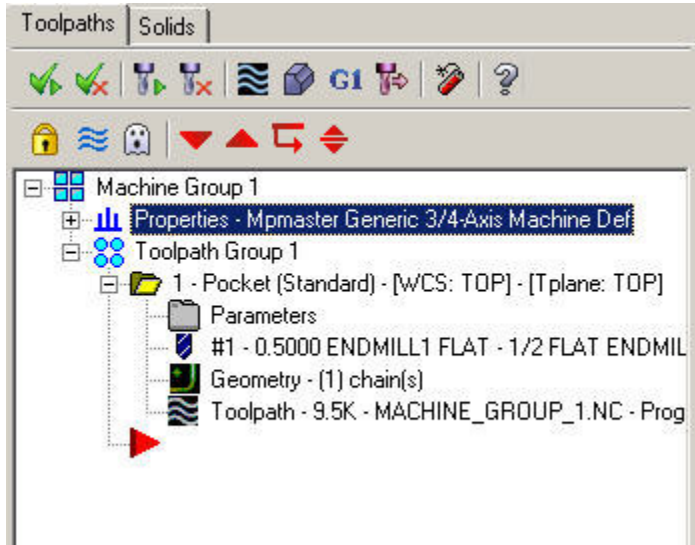
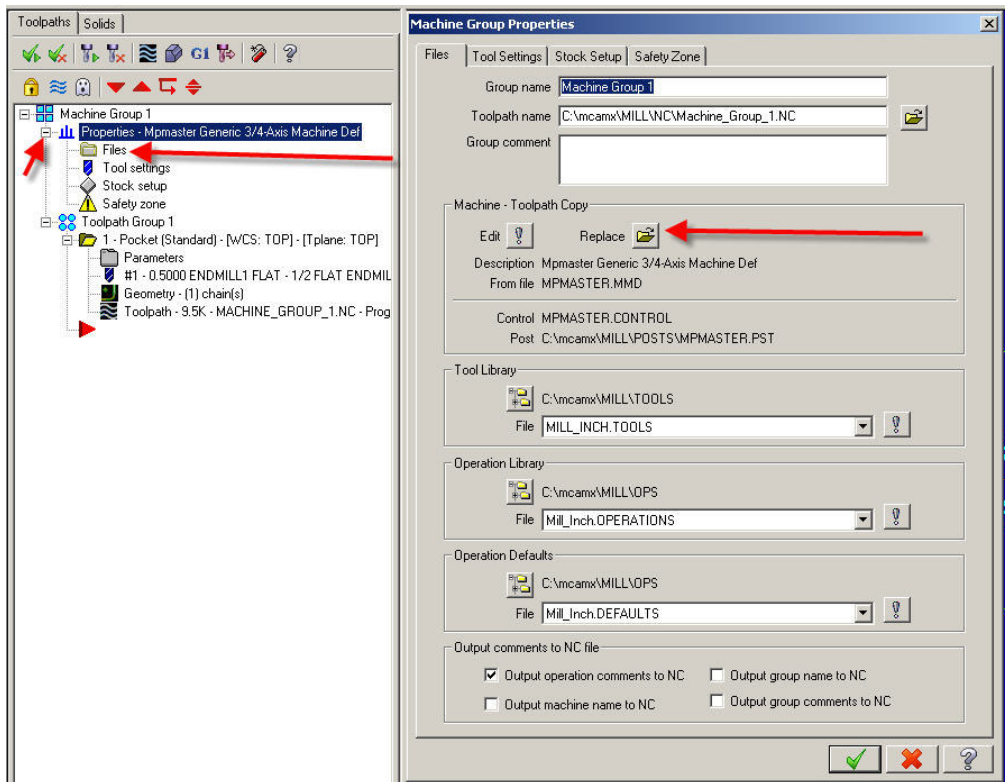


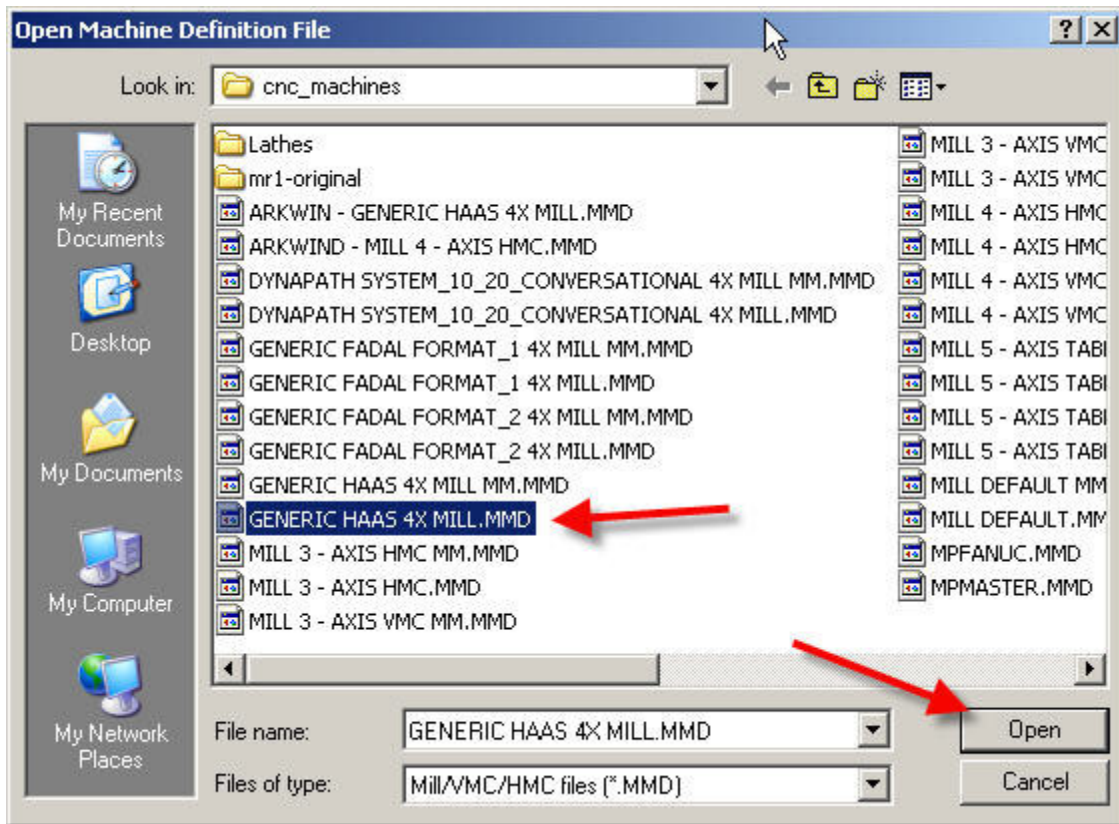
How to change your post processor in Mastercam X



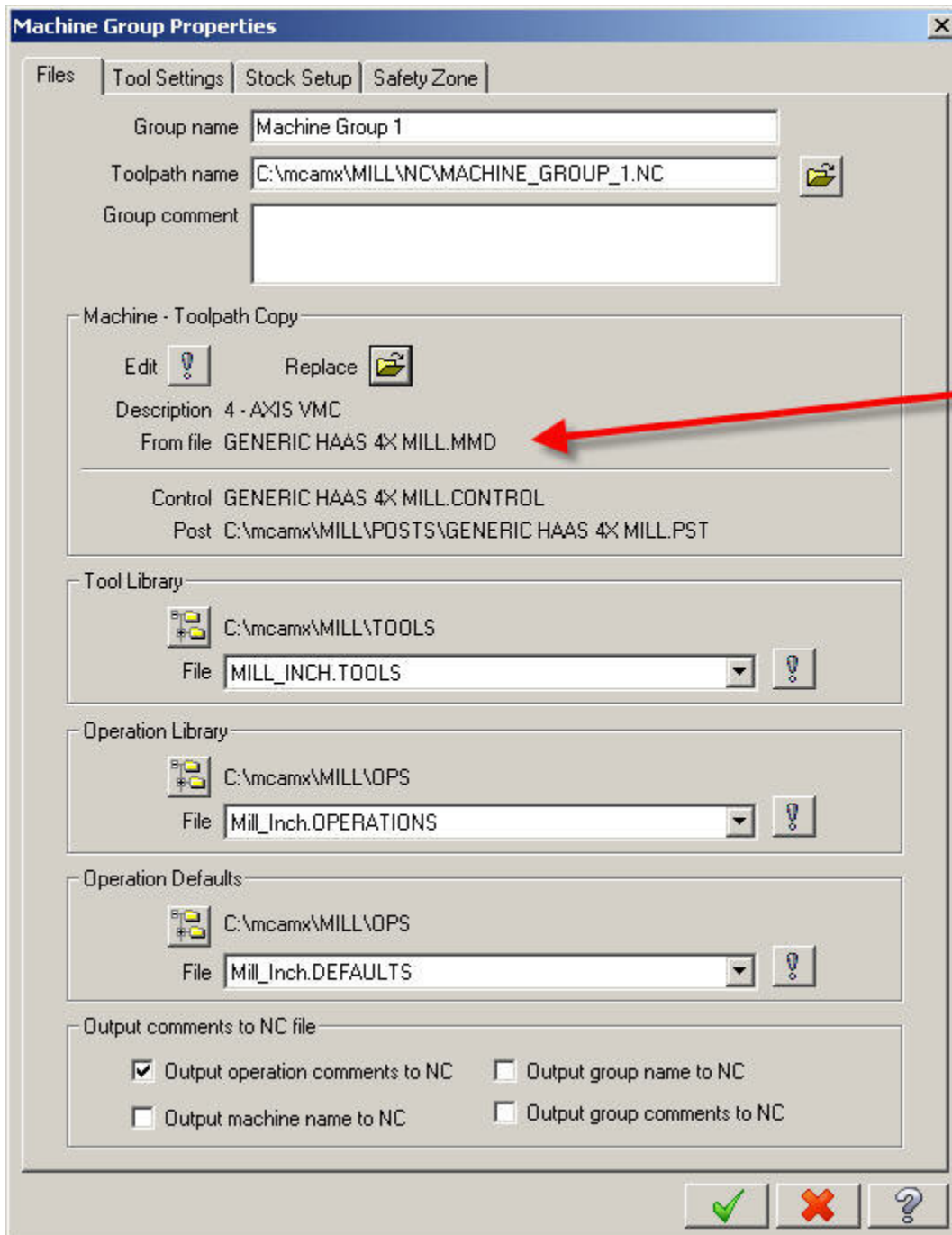
Note that under Machine Group1, the properties icon lists Mpmaster Generic as the current post.



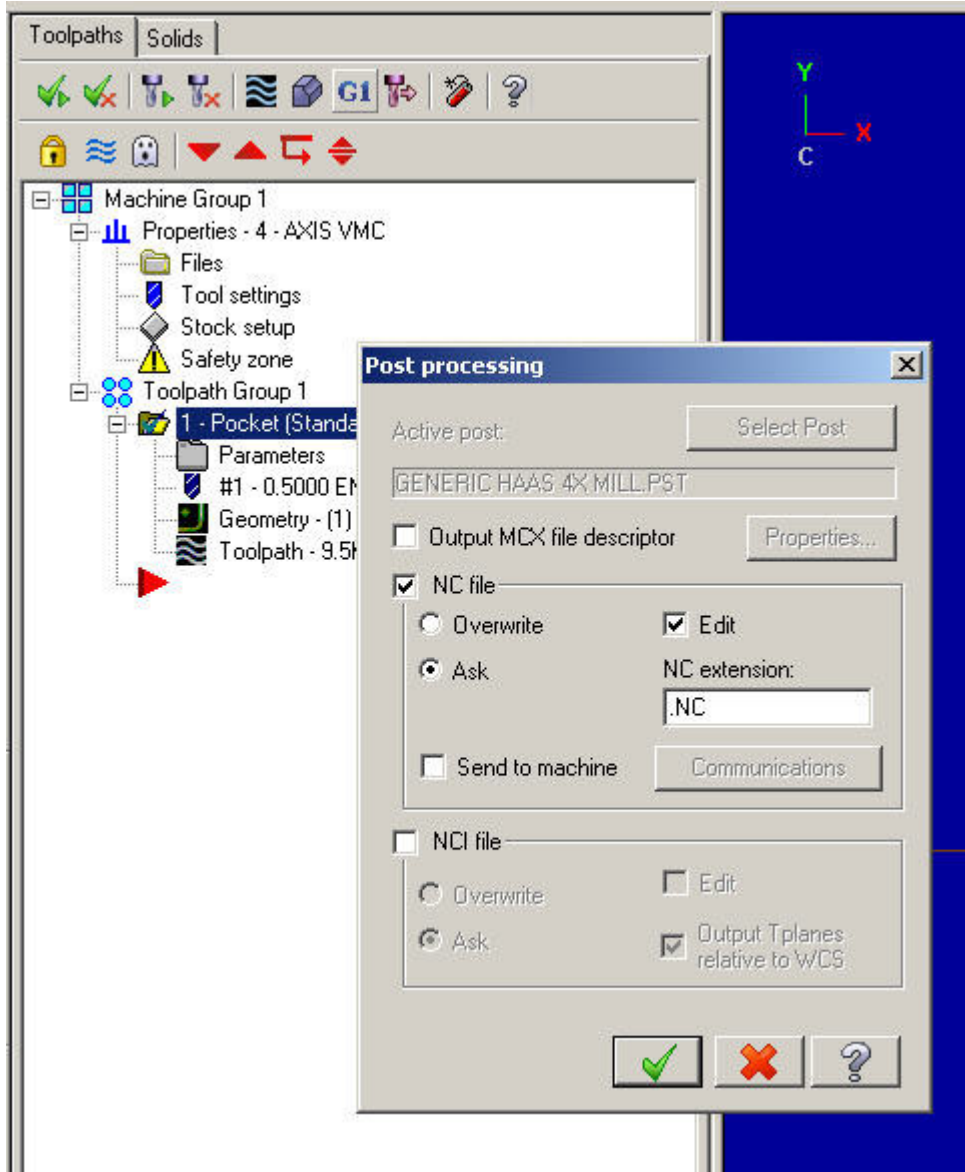
To replace the post first expand the properties icon. Clicking on the files icon will bring up the above dialog box. The post processor is changed by clicking on the replace button and selecting a new machine definition.



Select the appropriate machine definition and click open. In this case we will select the Generic Haas 4x Machine definition. The machine definition contains inside of it, the appropriate post.



Note how the machine definition now used is for a Haas.



When posting, the new post processor will be displayed on the post processing dialog box.